



ARMORSEAL[®]



A full line of commercial floor coatings



for a full range of applications.





A solid foundation for a dependable floor.

You want your floor coating to look good, perform to your requirements and last long. But each floor is different, so choosing products that will work best for your application is critical.

Sherwin-Williams has the answer. Our full line of ArmorSeal® Heavy Duty Floor Coatings will stand up to anything from light foot traffic in retail stores to facilities with heavy vehicular traffic. And like every product we offer, ArmorSeal is backed by more than 145 years of experience and innovation — along with the support of more than 3,400 stores across North America.

Consider your needs. Then explore the variety of products within the ArmorSeal line using the easy-to-compare charts, performance guides and application recommendations in this brochure.

Quick Reference for Common Recommendations

To make selecting the right products easy, Sherwin-Williams has paired some common applications with appropriate ArmorSeal products. A standard and premium option are provided for each. If you have a more-specific project or think your floor requires even greater durability, Sherwin-Williams offers more-advanced products. Contact your local sales representative for details.

STANDARD PERFORMANCE		PREMIUM PERFORMANCE	
PRIMER	TOPCOAT	PRIMER	TOPCOAT

LIGHT FOOT TRAFFIC

Application areas: Offices, janitorial closets, back rooms, service corridors and areas subject to light foot traffic or hand carts

Warehouse & Storage	Tread-Plex™ Primer	Tread-Plex™ Acrylic Water Based Coating	1000HS*	1000HS* or HS Polyurethane
Retail, Healthcare General, Schools General	Tread-Plex™ Primer	Tread-Plex™ Acrylic Water Based Coating	1000HS*	1000HS* or HS Polyurethane

LIGHT TO MODERATE TRAFFIC

Application areas: Service areas, restrooms, locker rooms, aisleways, cafeteria floors

Automotive Showrooms	Floor-Plex® 7100 Primer Water Based Epoxy*	1K Urethane	33 Epoxy Primer/Sealer	650 SL/RC* or HS Polyurethane
Automotive Service Areas, Schools, Restrooms, Locker Rooms	1000HS*	Rexthane™ I	33 Epoxy Primer/Sealer	650 SL/RC* or HS Polyurethane
Auditoriums, Convention Centers	1000HS*	1000HS*	33 Epoxy Primer/Sealer	650 SL/RC* or HS Polyurethane
Amusement Parks & Zoos	Floor-Plex® 7100 Primer Water Based Epoxy*	Floor-Plex® 7100*	1000HS*	1000HS* or HS Polyurethane

MODERATE TO HEAVY VEHICLE TRAFFIC

Application areas: Aisleways used for heavy fork trucks with rubber and steel wheels, high-traffic wear areas, loading docks

Manufacturing, Warehouses, Retail Areas with Fork Trucks, Loading Docks (<i>Optional nonskid additive</i>)	1000HS*	1000HS*	33 Epoxy Primer/Sealer	650 SL/RC* or HS Polyurethane
Automotive Service Bays, Airplane Hangars	1000HS*	Rexthane™ I	33 Epoxy Primer/Sealer	650 SL/RC* or HS Polyurethane

*These products are for interior use only.



Product Features

From color options to cleanup methods, ArmorSeal® products offer characteristics that suit nearly any application need—including yours.



PRIMERS

PROTECTIVE & MARINE COATINGS
ARMORSEAL TREAD-PLEX™
 Water Based Acrylic Floor PRIMER

PROTECTIVE & MARINE COATINGS
ARMORSEAL
 Water Based Floor Epoxy Primer/Sealer CLEAR

PROTECTIVE & MARINE COATINGS
ARMORSEAL FLOOR-PLEX 7100
 Water Based Epoxy PRIMER

	B90W110	Part A B70VQ10 Part B B60VQ10	Part A B70W410 Part B B70V400
DESCRIPTION	General-purpose, 100% acrylic, interior and exterior floor primer. When topcoated, it provides a tough, alkali-resistant finish which will withstand hard wear, abrasion, grease, oils and cleaning equipment.	A 38% solids primer, compatible with most high-performance finish coats and, in many cases, can be used as an effective barrier coat when coating previously painted surfaces. Can also be used as a primer for damp concrete or masonry surfaces.	A heavy-duty, low-VOC, low-odor, two-component, catalyzed, waterborne, polyamide epoxy floor primer. Provides overall performance comparable to that of most solventborne epoxy floor systems. Designed for use under ArmorSeal finish coats.
FEATURES	<ul style="list-style-type: none"> • Fast-drying • Water cleanup • Enhances adhesion by penetrating concrete • Excellent surface-wetting properties • Outstanding application properties 	<ul style="list-style-type: none"> • Abrasion-resistant • Fast-drying • Excellent adhesion • Chemical-resistant • Impact-resistant • Solvent-resistant • Dry heat-resistant 	<ul style="list-style-type: none"> • Penetrates into concrete to promote adhesion • Water cleanup • Outstanding application properties
FINISH	Low Sheen	Gloss	Low Gloss
PACKAGE COLOR(S)	Off White	Clear	Off White
CUSTOM COLORS	No	No	No
STANDARDS COMPLIANCE AS OF 04/30/12	<100 g/L	<250 g/L	<250 g/L
	OTC IM <340 g/L Yes	OTC IM <340 g/L Yes	OTC IM <340 g/L Yes
	SCAQMD IM <100 g/L Yes	SCAQMD IM <100 g/L No	SCAQMD IM <100 g/L No
	CARB IM <250 g/L Yes	CARB IM <250 g/L Yes	CARB IM <250 g/L Yes
	Canada IM <340 g/L Yes	Canada IM <340 g/L Yes	Canada IM <340 g/L Yes

IM = Industrial Maintenance Coatings

Lighter foot traffic



PROTECTIVE & MARINE COATINGS

ARMORSEAL
Water Based Floor Epoxy Primer
LIGHT GRAY

PROTECTIVE & MARINE COATINGS

ARMORSEAL 33
Epoxy Primer/Sealer
LIGHT GRAY - EPOXY

Part A B70AQ11 Part B B60VQ11		Part A B58AQ33 Part B B60VQ33	
An 87% solids primer, compatible with most high-performance finish coats and, in many cases, can be used as a primer for damp concrete or masonry surfaces.		Low-viscosity, 100% solids, high-build, fast-cure, epoxy primer designed for use under ArmorSeal 650 or where a high-build primer is needed.	
<ul style="list-style-type: none"> • Abrasion-resistant • Fast-drying • Excellent adhesion • Chemical-resistant • Impact-resistant • Solvent-resistant • Dry heat-resistant 		<ul style="list-style-type: none"> • Penetrates into concrete to promote adhesion • Outstanding application properties 	
Satin		Gloss	
Light Gray		Light Gray, Clear	
No		No	
<340 g/L		<50 g/L	
OTC IM <340 g/L	Yes	OTC IM <340 g/L	Yes
SCAQMD IM <100 g/L	No	SCAQMD IM <100 g/L	Yes
CARB IM <250 g/L	No	CARB IM <250 g/L	Yes
Canada IM <340 g/L	Yes	Canada IM <340 g/L	Yes

Heavier floor traffic

TOPCOATS

PROTECTIVE & MARINE COATINGS

ARMORSEAL TREAD-PLEX™
Water Based Acrylic
WHITE

PROTECTIVE & MARINE COATINGS

ARMORSEAL 1K
Water Based Urethane Floor Enamel
EXTRA WHITE

B90 Series		B65-700 Series	
A one-component general-purpose, interior and exterior waterborne floor coating. This dries rapidly to a tough, alkali-resistant finish which will withstand hard wear, abrasion, grease, oils and cleaning equipment.		High-performance, one-component polyester water-based urethane, formulated specifically for industrial floor applications. Provides outstanding abrasion resistance and good chemical resistance with excellent color and gloss retention. Performance comparable to two-component waterbased urethane.	
<ul style="list-style-type: none"> • Fast-drying • Water cleanup • Slip-resistant properties • Abrasion-resistant 		<ul style="list-style-type: none"> • Fast-drying • Impact-resistant • Abrasion-resistant • Resistant to hot tire pickup 	
Semi-Gloss		Gloss	
Deck Gray, Haze Gray, Tile Red, White		Haze Gray, Clear, Extra White	
Yes, <i>EnviroToners™</i> and <i>Blend-A-Color</i>		Yes, <i>EnviroToners™</i>	
<100 g/L		<250 g/L	
OTC IM <340 g/L	Yes	OTC IM <340 g/L	Yes
SCAQMD IM <100 g/L	Yes	SCAQMD IM <100 g/L	No
CARB IM <250 g/L	Yes	CARB IM <250 g/L	Yes
Canada IM <340 g/L	Yes	Canada IM <340 g/L	Yes

Lighter foot traffic



 PROTECTIVE & MARINE COATINGS ARMORSEAL FLOOR-PLEX 7100 Water Based Epoxy WHITE	 PROTECTIVE & MARINE COATINGS ARMORSEAL 1000HS Epoxy Floor Coating WHITE/TINT BASE	 PROTECTIVE & MARINE COATINGS ARMORSEAL REXTHANE I Moisture Cure Urethane WHITE/WHITE TINT BASE	 PROTECTIVE & MARINE COATINGS ARMORSEAL HS Polyurethane Floor Enamel HAZE GRAY	 PROTECTIVE & MARINE COATINGS ARMORSEAL 650 SL/RC Epoxy – Self Leveling WHITE TINT BASE
--------------------------------------------------------------------------------------------------------------------------------------------------------------------------------------------	------------------------------------------------------------------------------------------------------------------------------------------------------------------------------------------------	-------------------------------------------------------------------------------------------------------------------------------------------------------------------------------------------------------------	--------------------------------------------------------------------------------------------------------------------------------------------------------------------------------------------	-------------------------------------------------------------------------------------------------------------------------------------------------------------------------------------------------------

Part A B70-400 Series Part B B70V400	Part A B67-2000 Series Part B B67V2002	B65-60 Series	Part A B65-220 Series Part B B65V220	Part A B58-650 Series Part B B60VQ655
Heavy-duty, interior, VOC-compliant, low-odor, two-component, catalyzed, waterborne, polyamide epoxy floor coating. Product dries rapidly to an extra-tough gloss finish which will withstand heavy industrial traffic, abrasion and general chemical attack.	A high-solids, heavy-duty, two-component, catalyzed, polyamide epoxy coating formulated for demanding industrial requirements. This dries rapidly to a tough, high-gloss finish with excellent resistance to alkalis, abrasion, corrosion and chemical attack.	High-solids, single-component, aliphatic, moisture-cure urethane, VOC-complying, moisture-resistant industrial floor coating. This urethane coating cures to a high-gloss and chemical-resistant film equivalent to two-part urethane coatings.	Two-component, heavy-duty, exterior/interior, low-VOC, high-solids, polyester aliphatic urethane industrial floor coating. Provides a high gloss, excellent chemical resistance, color retention and chalk resistance.	100% solids, self-leveling, recoatable epoxy, two-component, heavy-duty floor system that provides a high-gloss, seamless, hygienic surface that is extremely hard-wearing and durable.
<ul style="list-style-type: none"> • Chemical-resistant • Impact-resistant • Abrasion-resistant • Resists yellowing • Low-odor 	<ul style="list-style-type: none"> • Chemical-resistant • Impact-resistant • Abrasion-resistant • Outstanding application properties 	<ul style="list-style-type: none"> • Chemical-resistant • Impact-resistant • Abrasion-resistant • Resists yellowing • Fast hardness development 	<ul style="list-style-type: none"> • Fast-drying • Slip-resistant • Abrasion-resistant 	<ul style="list-style-type: none"> • Chemical-resistant • Impact-resistant • Abrasion-resistant
Gloss	Gloss	Gloss	Gloss	Gloss
Deck Gray, Haze Gray, Tile Red, White	Deck Gray, Haze Gray, Tile Red, Safety Yellow, Sandstone, Clear, White	Deck Gray, Haze Gray, Sandstone, Clear, White	Haze Gray, Clear, Extra White	Deck Gray, Tile Red, Haze Gray, Sandstone, Clear, White
Yes, <i>EnviroToners™</i>	Yes, <i>Maxitoners</i>	Yes, <i>Maxitoners</i>	Yes, <i>Maxitoners</i>	Yes, <i>Maxitoners</i>
<250 g/L	<340 g/L* Colors only <400 Clear	<300 g/L	<250 g/L	<100 g/L
OTC IM <340 g/L Yes	OTC IM <340 g/L Yes* / No	OTC IM <340 g/L Yes	OTC IM <340 g/L Yes	OTC IM <340 g/L Yes
SCAQMD IM <100 g/L No	SCAQMD IM <100 g/L No* / No	SCAQMD IM <100 g/L No	SCAQMD IM <100 g/L No	SCAQMD IM <100 g/L Yes
CARB IM <250 g/L Yes	CARB IM <250 g/L No* / No	CARB IM <250 g/L No	CARB IM <250 g/L Yes	CARB IM <250 g/L Yes
Canada IM <340 g/L Yes	Canada IM <340 g/L Yes* / No	Canada IM <340 g/L Yes	Canada IM <340 g/L Yes	Canada IM <340 g/L Yes

Heavier floor traffic

Performance Characteristics

Application methods vary. So does the level of performance you may need. Let us help you determine the product type, the time and the tools necessary to get your job done.

PRIMERS

	TREAD-PLEX™ PRIMER	WATER BASED EPOXY PRIMER/SEALER CLEAR	FLOOR-PLEX® 7100 PRIMER WATER BASED EPOXY	WATER BASED EPOXY PRIMER LIGHT GRAY	33 EPOXY PRIMER/SEALER
MIX RATIO	Single component	4-to-1 by volume	1-to-1 by volume	4-to-1 by volume	2.85-to-1 by volume (prepackaged units)
APPLICATION METHOD	Brush or roll using a nylon/polyester brush or a ¼" or ⅜" soft woven, solvent-resistant core roller cover	Brush or roll using a nylon/polyester brush or a ⅜" or ½" soft woven, solvent-resistant core roller cover	Brush or roll using a nylon/polyester or natural bristle brush or a ¼" or ⅜" soft woven, solvent-resistant core roller cover	Spread with rubber squeegee and back roll with a ⅜" soft woven, solvent-resistant core roller cover	Spread with rubber squeegee and back roll with a ⅜" soft woven, solvent-resistant core roller cover
RECOMMENDED SPREAD RATE	341–458 sq. ft./gal	200–300 sq. ft./gal	368–490 sq. ft./gal	200 sq. ft./gal	200 sq. ft./gal
DRY FILM THICKNESS	1.5–2.0 mils	2.0–3.0 mils	1.5–2.0 mils	5.0–7.0 mils	8.0 mils
SWEAT-IN TIME @77° F	None	None	15 minutes	None	None
POT LIFE	NA	6–8 hours	6 hours	30 minutes	30 minutes
DRY @77° F to Touch	30 minutes	1–2 hours	45 minutes	4–6 hours	4–6 hours
to Foot Traffic	8 hours	–	48 hours	–	–
to Heavy Traffic	18 hours	–	72 hours	–	–
RECOAT WINDOW @77° F	45 minutes	6–48 hours	8 hours – 30 days	6–48 hours	6–24 hours
ODOR (slight, moderate, strong)*	Slight	Moderate	Slight	Moderate	Slight
MEETS ADA REQUIREMENTS	No	No	No	No	No
EXTERIOR USE	Yes	Yes (Topcoat w/ exterior product)	Yes (Topcoat w/ exterior product)	Yes (Topcoat w/ exterior product)	Yes
EASE OF APPLICATION**	★	★★	★	★★★★	★★★★
PREP CATEGORY	Sealer	Sealer	Sealer	Thin Film	Thin Film

Lighter foot traffic

Heavier floor traffic

*NOTE: High-odor products have a longer return-to-service time.

**Ease-of-application key: Least difficult = ★ Some difficulty = ★★ More difficult = ★★★ Most difficult =★★★★



TOPCOATS

TREAD-PLEX™ ACRYLIC WATER BASED COATING	1K URETHANE	FLOOR-PLEX® 7100	1000HS	REXTHANE™ I	HS POLYURETHANE	650 SL/RC
Single component	Single component	1-to-1 by volume	1-to-1 by volume	Single component	2-to-1 by volume	2 components (prepackaged units)
Brush or roll using a nylon/polyester brush or a ¼" or ⅜" soft woven, solvent-resistant core roller	Brush or roll using a nylon/polyester brush or a ¼" or ⅜" soft woven, solvent-resistant core roller	Brush or roll using a nylon/polyester or natural bristle brush or a ¼" or ⅜" soft woven, solvent-resistant core roller cover	Brush or roll using a nylon/polyester or natural bristle brush or a ⅜" soft woven, solvent-resistant core roller cover	Brush or roll using a natural bristle brush or a mohair roller cover	Brush or roll using a ¼" soft woven roller cover or a natural bristle brush	Rubber squeegee and cross-roll with a ⅜" soft woven roller. After 20-30 minutes, spike roll. Don't spike roll after 40 minutes
345–460 sq. ft./gal	136–272 sq. ft./gal	328–437 sq. ft./gal	206–350 sq. ft./gal	358–537 sq. ft./gal	380–570 sq. ft./gal	50–160 sq. ft./gal
1.5–2.0 mils	1.0–4.0 mils	1.5–2.0 mils	3.0–5.0 mils	2.0–3.0 mils	2.0–3.0 mils	10.0–30.0 mils
None	None	30 minutes	30 minutes	None	None	None
NA	NA	4 hours	4 hours	NA	4 hours	40 minutes
30 minutes	45 minutes	1 hour	2 hours	2 hours	2 hours	6–12 hours
8 hours	8 hours	24 hours	24 hours	24 hours	12 hours	24 hours
18 hours	18 hours	72 hours	48–72 hours	3 days	72 hours	72 hours
4 hours	6 hours–30 days	8 hours–30 days	8 hours–7 days	9 hours–14 days	12–48 hours	8–72 hours
Slight	Moderate	Slight/Moderate	Strong	Strong	Strong	Slight
Yes	Yes	Yes	Yes	Yes	No	No
Yes	Yes	No	No	Yes	Yes	No
★	★	★★	★★★	★★★★	★★★★	★★★★★
Sealer	Thin Film	Sealer	Thin Film	Sealer	Sealer	High Build

Lighter foot traffic

Heavier floor traffic

The Importance of Surface Preparation

Proper preparation ensures adhesion and will prolong the service life of your floor coating system.

Selecting the proper preparation methods will depend on factors including the condition of the substrate, the environment and the ArmorSeal® products you've selected. One or more of the methods listed below may be necessary. If you have any questions, consult your Sherwin-Williams representative.

1

DETERMINE THE PREP CATEGORY FOR YOUR PRODUCT

PRODUCT TYPE CATEGORY	ARMORSEAL® PRODUCT	PRODUCT DRY FILM THICKNESS
SEALER	Tread-Plex™ Primer Water Based Epoxy Primer/Sealer Clear Tread-Plex™ Acrylic Water Based Coating Floor-Plex® 7100 Primer Water Based Epoxy Floor-Plex® 7100 Rexthane™ I HS Polyurethane	0–3 mils
THIN-FILM	Water Based Epoxy Primer Gray 33 Epoxy Primer/Sealer 1K Urethane 1000HS	4–10 mils
HIGH-BUILD	650 SL/RC	10–40 mils

NOTES:

Order ICRI chips through a Sherwin-Williams store or representative.
Always refer to the product data sheet and product application bulletin for detailed surface preparation information.



Up to 80% of all coating failures can be attributed to inadequate surface preparation. Let Sherwin-Williams help you achieve a sound surface.

2

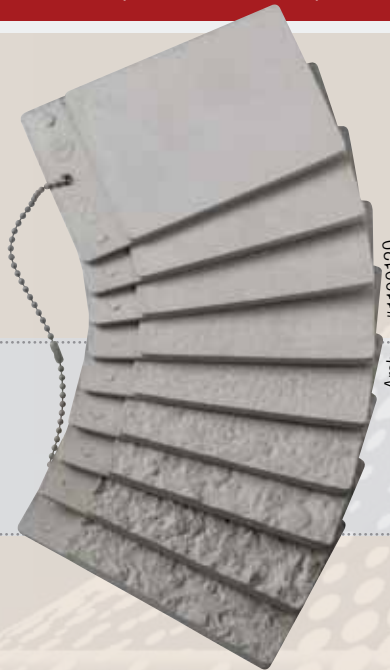
PROPERLY CLEAN CONCRETE SURFACE AND ACHIEVE APPROPRIATE CONCRETE SURFACE PROFILE

Remove all oil, dust, grease, dirt and other foreign materials to ensure adequate adhesion. Follow the SSPC-SP13/NACE 6 standard for concrete surface preparation.

CONCRETE SURFACE PROFILE (CSP) REQUIRED ICRI CHIPS AS REFERENCED BELOW (ARCHWAY #1100120)

ACCEPTABLE METHODS OF PREPARATION

CSP #1-3



- scrubbing
- low-pressure water
- sand-blasting
- diamond grind

CSP #1-3

- scrubbing
- low-pressure water
- sand-blasting
- shot-blasting
- diamond grind

CSP #3-5

- sand-blasting
- shot-blasting
- scarifying
- needle-scaling
- diamond grind

Your Sherwin-Williams representative can review surface preparation with you using:
 —The SSPC (The Society of Protective Coatings) SP13/NACE 6 surface preparation standard. More information available at sspc.org.
 —The ICRI (The International Concrete Repair Institute) No. 03732 CSP1-5. More information available at icri.org.



Make your floor stand out with color and style.

ArmorSeal® delivers more than high performance; it delivers great looks. Choose from popular package colors, a wide range of custom colors or a clear finish to give your floor outstanding aesthetics.



Haze Gray



Deck Gray



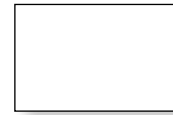
Sandstone



Tile Red



Safety Yellow

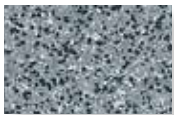


White



Clear

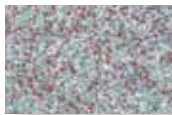
ArmorQuartz® A Decorative Broadcast Color Quartz System



Charcoal
6403-69567



Riverstone
6403-69591



Gray Fox
6403-69518



Mt. Sage
980-0764



Bramble
932-1340



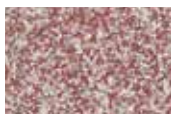
Sandpoint
989-7919



Pearl Gray
6403-69583



Flintrock
932-3668



Taco Red
989-7927

This reproduction approximates the actual color. Factors such as the type of product, degree of gloss, texture, size and shape of area, lighting, heat or method of application may cause color variance.

These 50 lb. bags available through General Polymers.

H&C® Holographic and Deco-Flakes



Pewter Blend
898-2712



Beige/Ivory Blend
898-2720



Red Blend
898-2738



Green Blend
6501-22864



Holographic Blend
6501-24951



- Provides a unique decorative finish and helps hide imperfections
- Adds extra traction
- Various chip blends for a distinct look for mixing and matching
- Deco-Flakes available in quarts; Holographic Flakes in 1-oz. packages

H&C Holographic and Deco-Flakes available through the DSC. Additional colors available in 50 lb. bags through General Polymers at 1-800-797-8010, option 2.

Improve Your Results.

To help you achieve the best results possible on your job, Sherwin-Williams also offers a full line of complementary products to help you complete the job.



ArmorSeal® ExpressPatch

Designed to repair and protect concrete and masonry substrates from thermal shock, impact, corrosion, mild chemical attack and abrasion.

- 100% solids
- Low-odor, water-based urethane slurry floor patch kit
- Does not support microbial growth
- Fast return to service — foot traffic in six hours
- Low temperature cure
- Can be applied to damp concrete



ArmorSeal® Crack Filler

Developed specifically for sealing, smoothing and fairing applications on concrete, metals, plastics (FRP) wood or masonry.

- Two-component, fast-set epoxy paste
- Non-sagging — suitable for vertical and horizontal surfaces
- Resists salt water, oils, fuels, and many other chemicals
- Concrete/masonry use: fill and smooth hairline cracks, bug holes, anchor-bolt holes, gouges or divots
- Steel/metal use: smooth welds, pits, rough surfaces, irregularities, and seams



ArmorSeal® Flexible Joint Sealant

A resilient filler for horizontal expansion joints that delivers excellent flexural strength and elongation while maintaining tensile strength.

- Two-component polymer hybrid
- Good adhesion and flexibility over a wide temperature range
- Use to fill and seal narrow masonry control joints and grooves
- Helps prevent damage to the joint and its edges

ArmorSeal® 5020 Epoxy Floor Resurfacer

A trowelable, high-build epoxy floor resurfacer designed for concrete, wood and steel substrates that require a high degree of chemical and abrasion resistance.

- Ideal for high traffic areas
- Suitable for use in USDA-inspected facilities
- For new and old floors of concrete, wood or steel
- Excellent abrasion and impact resistance



swarmorseal.com

For additional details, see your Sherwin-Williams store or representative, or call 800-524-5979 to have a representative contact you.

Product Ordering Guide



PRODUCT/COLOR	REX #	SALES #	SIZE/FILL	HOW PACKAGED
ARMORSEAL 1K WB URETHANE FLOOR ENAMEL				
EXTRA WHITE	B65W775	6403-65912 6403-65920	1 gal 5 gal	4 gal cans per box 5 gal pail
CLEAR	B65C775	6403-65938 6403-65946	1 gal 5 gal	4 gal cans per box 5 gal pail
CLEAR TINT BASE	B65T775	6403-65953 6403-65961	1 gal 5 gal	4 gal cans per box 5 gal pail
HAZE GRAY	B65A775	6403-65979 6403-65987	1 gal 5 gal	4 gal cans per box 5 gal pail
ARMORSEAL HS POLYURETHANE FLOOR ENAMEL 2:1 MIX				
HAZE GRAY PART A <i>(Requires Hardener Below)</i>	B65A220	6403-85910 6403-85290	1 gal 5 gal	4 gal cans per box 5 gal pail
CLEAR PART A <i>(Requires Hardener Below)</i>	B65C220	6403-93096 6403-93104	1 gal 5 gal	4 gal cans per box 5 gal pail
EXTRA WHITE/TINT BASE PART A <i>(Requires Hardener Below)</i>	B65W220	6015-48985 6015-48993	1 gal 5 gal	4 gal cans per box 5 gal pail
ULTRADEEP TINT BASE PART A <i>(Requires Hardener Below)</i>	B65T220	6015-48969 6015-48977	1 gal 5 gal	4 gal cans per box 5 gal pail
HARDENER PART B	B65V220	6403-85894 6403-85308	1 gal 5 gal	4 gal cans per box 5 gal pail
ARMORSEAL 1000HS EPOXY 1:1 MIX				
CLEAR PART A <i>(Requires Hardener Below)</i> <i>(Interior only)</i>	B67C2000	6401-20309 6401-20317	1 gal 5 gal	4 gal cans per box 5 gal pail
DECK GRAY PART A <i>(Requires Hardener Below)</i>	B67A2000	6401-20333	1 gal	4 gal cans per box
TILE RED PART A <i>(Requires Hardener Below)</i>	B67R2000	6401-20341	1 gal	4 gal cans per box
HAZE GRAY PART A <i>(Requires Hardener Below)</i>	B67A2001	6401-20358 6401-73548	1 gal 5 gal	4 gal cans per box 5 gal pail
SANDSTONE PART A <i>(Requires Hardener Below)</i>	B67H2000	6401-20366	1 gal	4 gal cans per box
EXTRA WHITE/TINT BASE PART A <i>(Requires Hardener Below)</i>	B67W2001	6405-16530 6405-16548	1 gal 5 gal	4 gal cans per box 5 gal pail
ULTRADEEP BASE PART A <i>(Requires Hardener Below)</i>	B67T2004	6500-99146 6500-99153	1 gal 5 gal	4 gal cans per box 5 gal pail
SAFETY YELLOW PART A <i>(Requires Hardener Below)</i>	B67Y2000	6401-20382	1 gal	4 gal cans per box
HARDENER PART B	B67V2002	6401-20408 6401-73555	1 gal 5 gal	4 gal cans per box 5 gal pail
ARMORSEAL REXTHANE I – MCU				
HAZE GRAY	B65A60	6403-27870 6403-27888	1 gal 5 gal	4 gal cans per box 5 gal pail
DECK GRAY	B65A61	6403-27896	1 gal	4 gal cans per box
SANDSTONE	B65H60	6403-27912	1 gal	4 gal cans per box
CLEAR	B65C60	6403-27920 6403-30825	1 gal 5 gal	4 gal cans per box 5 gal pail
WHITE/WHITE TINT BASE	B65W60	6403-28597 6403-86082	1 gal 5 gal	4 gal cans per box 5 gal pail
ULTRADEEP TINT BASE	B65T60	6403-86090 6303-86108	1 gal 5 gal	4 gal cans per box 5 gal pail
ARMORSEAL FLOOR-PLEX 7100 WB EPOXY 1:1 MIX				
PRIMER - OFF WHITE PART A <i>(Requires Hardener Below)</i>	B70W410	6403-21840 6403-21857	1 gal 5 gal	4 gal cans per box 5 gal pail
HAZE GRAY PART A <i>(Requires Hardener Below)</i>	B70A400	6401-19996 6401-20002	1 gal 5 gal	4 gal cans per box 5 gal pail
DECK GRAY PART A <i>(Requires Hardener Below)</i>	B70A401	6401-20010 6401-20028	1 gal 5 gal	4 gal cans per box 5 gal pail
TILE RED PART A <i>(Requires Hardener Below)</i>	B70R400	6401-20044 6401-20051	1 gal 5 gal	4 gal cans per box 5 gal pail
WHITE/TINT BASE PART A <i>(Requires Hardener Below)</i> <i>(Use EnviroToner Colorants Only)</i>	B70W401	6401-20069 6401-20077	1 gal 5 gal	4 gal cans per box 5 gal pail
CLEAR TINT BASE PART A <i>(Requires Hardener Below)</i> <i>(Use EnviroToner Colorants Only)</i>	B70T404	6403-60442 6403-60459	1 gal 5 gal	4 gal cans per box 5 gal pail
HARDENER PART B	B70V400	6401-20085 6401-20093	1 gal 5 gal	4 gal cans per box 5 gal pail

PRODUCT/COLOR	REX #	SALES #	SIZE/FILL	HOW PACKAGED
ARMORSEAL TREAD-PLEX WB ACRYLIC FLOOR COATING				
PRIMER - OFF WHITE	B90W110	6403-21824 6403-21832	1 gal 5 gal	4 gal cans per box 5 gal pail
WHITE	B90W100	6401-72623 6401-72631	1 gal 5 gal	4 gal cans per box 5 gal pail
HAZE GRAY	B90A101	6401-72649 6401-72656	1 gal 5 gal	4 gal cans per box 5 gal pail
DECK GRAY	B90A102	6401-72664 6401-72672	1 gal 5 gal	4 gal cans per box 5 gal pail
TILE RED	B90R103	6401-72680 6401-72698	1 gal 5 gal	4 gal cans per box 5 gal pail
EXTRA WHITE/TINT BASE	B90W111	6405-16837 6405-16845	1 gal 5 gal	4 gal cans per box 5 gal pail
ULTRADEEP/CLEAR TINT BASE	B90T104	6401-20200 6401-20218	1 gal 5 gal	4 gal cans per box 5 gal pail
ARMORSEAL 650 SL/RC - SELF LEVELING EPOXY Pre-measured NOTE: 1 gal. kits contain the STANDARD HARDENER				
HAZE GRAY PARTS A&B (KIT) PART A (Requires Hardener Below)	kB58AQ655 B58AQ655	240-1719 240-1727	1 gal kit 3-1/3 gal	2 cans in one box short filled 5 gal
DECK GRAY PARTS A&B (KIT) PART A (Requires Hardener Below)	kB58AQ656 B58AQ656	240-1735 240-1743	1 gal kit 3-1/3 gal	2 cans in one box short filled 5 gal
TILE RED PARTS A&B (KIT) PART A (Requires Hardener Below)	kB58RQ657 B58RQ657	240-1750 240-1768	1 gal kit 3-1/3 gal	2 cans in one box short filled 5 gal
SANDSTONE PARTS A&B (KIT) PART A (Requires Hardener Below)	kB58HQ658 B58HQ658	240-1776 240-1784	1 gal kit 3-1/3 gal	2 cans in one box short filled 5 gal
WHITE PARTS A&B (KIT) PART A (Requires Hardener Below)	kB58WQ651 B58WQ651	240-1800 240-1818	1 gal kit 3-1/3 gal	2 cans in one box short filled 5 gal
CLEAR PARTS A&B (KIT) PART A (Requires Hardener Below)	kB58VQ650 B58VQ650	240-1834 240-1842	1 gal kit 3-1/3 gal	2 cans in one box short filled 5 gal
WHITE TINT BASE PART A (KIT) (Use with Standard Hardener Only)	B58W650	6403-83154 6403-83162	84 oz 3-1/3 gal	short filled 1 gal - 4/box short filled 5 gal
ULTRADEEP TINT BASE PART A (KIT) (Use with Standard Hardener Only)	B58T650	6403-86116 6403-86124	84 oz 3-1/3 gal	short filled 1 gal - 4/box short filled 5 gal
STANDARD HARDENER - FOR ALL PART A'S - PART B FOR 1 & 5 GAL MIX	B60VQ655	6403-83329 240-1792	42 oz 1-2/3 gal	2 per box - short filled 1/2 gal short filled 2 gal
FAST SET HARDENER FOR 5 GAL. MIX (Do not use with White Tint Base or Clear Tint Base)	B60VQ656	6403-48439	1-2/3 gal	short filled 2 gal
ARMORSEAL 650SL RC HI-BUILD ADDITIVE				
HI-BUILD ADDITIVE PART C Order 1 bag of additive for each 5 gal. of 650SL by SMIS # (6 gal. mix pot or larger required)	B58DQ550	240-0455	25#	Bag
ARMORSEAL 33 PRIMER/SEALER Pre-measured				
LIGHT GRAY PARTS A&B (KIT) PART A (Requires Hardener Below)	kB58AQ33 B58AQ33	240-0000 240-0018	1 gal kit 3-1/2 gal	2 cans in one box short filled 5 gal
CLEAR PARTS A&B (KIT) PART A (Requires Hardener Below)	kB58CQ33 B58CQ33	6403-43760 6403-43778	1 gal kit 3-1/2 gal	2 cans in one box short filled 5 gal
HARDENER PART B	B60VQ33	240-0026	1-1/2 gal	short filled 2 gal
ARMORSEAL WATER BASED EPOXY PRIMER/SEALER Pre-measured				
CLEAR PARTS A&B (KIT) PART A (Requires Hardener Below)	kB70VQ10 B70VQ10	240-0067 240-0075	1 gal kit 4 gal	2 cans in one box short filled 5 gal
HARDENER PART B	B60VQ10	240-0083	gal	2 gal cans per box
ARMORSEAL WATER BASED EPOXY PRIMER/SEALER Pre-measured				
LIGHT GRAY PARTS A&B (KIT) PART A (Requires Hardener Below)	kB70AQ11 B70AQ11	240-0091 240-0109	1 gal kit 4 gal	2 cans in one box short filled 5 gal
HARDENER PART B	B60VQ11	240-0117	gal	2 gal cans per box
ARMORSEAL 5020 RESURFACER Pre-measured				
EPOXY FLOORING RESURFACER HAZE GRAY 20 SQ. FT. (KIT)	kB58V5021	240-0562	20 sq. ft. kit	Includes all components except aggregate
PRIMER & TOPCOAT (A&B) (KIT)	Order 1 40# bag of aggregate for each 20 sq. ft. of 5020 Resurfacer			
ARMORSEAL 5020 AGGREGATE				
AGGREGATE - NEUTRAL COLOR	B58DQ5022	240-0620	40# Bag	40# Bag
ARMORSEAL EXPRESSPATCH – FAST DRY URETHANE PATCH KIT				
DARK GRAY	kB58AQ5	6403-55491	1/2 gal 3 components, premeasured, approximately 1/2 gal mixed per kit	All components in one plastic bucket
ARMORSEAL FLEXIBLE JOINT SEALANT 1:1 MIX				
GRAY PARTS A&B (KIT)	kB58AQ1	240-0646	2 gal kit	2 gal cans per box
ARMORSEAL CRACK FILLER 1:1 MIX				
GRAY PARTS A&B (KIT)	kB58AQ2	240-0653	2 gal kit	2 gal cans per box

Attention Store Managers: not all ArmorSeal products are stocked in all DSCs. Please consult **My Paint Connection** for stocking DSCs.

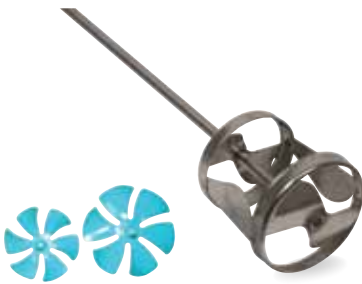
Associated Products

Sherwin-Williams has everything you need to complete your project quickly and easily. Choose from a wide variety of premium tools and supplies to get the job done right.



Spiked Shoes *Walk on applied materials during the application and finishing process*

ITEM	SALES NO.	MFG. NO.
Black Polypropylene Spiked Shoes with 3/4" Spikes (pair)	910-7244	46106
Flexible Bed Spiked Shoes with 1/2" Spikes - Small (fits shoe size 6 to 7-1/2)	171-2876	46140
Flexible Bed Spiked Shoes with 1/2" Spikes - Med (fits shoe size 8 to 9-1/2)	171-2884	46141
Flexible Bed Spiked Shoes with 1/2" Spikes - Lg (fits shoe size 10 to 11-1/2)	171-2892	46142
Flexible Bed Spiked Shoes with 1/2" Spikes - XLg (fits size 12 to 13-1/2)	171-2900	46143



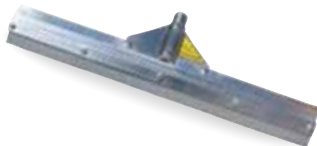
Mixers *Use to mix low-viscosity floor coating materials*

ITEM	SALES NO.	MFG. NO.
Jiffy Mixer Blade, 1-2 Gallon	976-4465	47432
Jiffy Mixer Blade, 2-5 Gallon	976-4473	47434
Small Pro-Grade Turbine Blade Style Low Viscosity Mixing Paddle, 1-2 Gallon	869-0141	47442
Large Pro-Grade Turbine Blade Style Low Viscosity Mixing Paddle, 2-5 Gallon	869-0158	47444



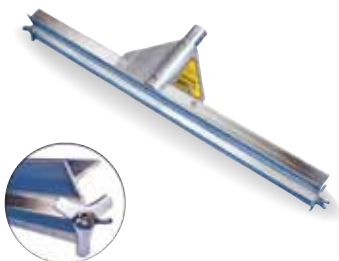
Squeegees *Solvent-resistant squeegees apply coatings quickly and evenly*

ITEM	SALES NO.	MFG. NO.
24" Complete Application Squeegee, 1/8" Notch Red Rubber Blade (Reversible Blade: Flat - 1/8" Notch), THA*	179-8271	78129
Replacement Blade for 78129, 24" x 1/8" Notch/Flat Red Rubber Blade	976-6379	79730
24" Complete Application Squeegee, No-Notch (Flat) EPDM Blade, THA* (Replacement Blade 162-3909/79210)	171-2926	78554
24" Complete Application Squeegee, 1/8" Notch EPDM Blade, THA* (Replacement Blade 162-3933/79230)	181-3583	78128
24" Complete Application Squeegee, 3/16" Notch EPDM Blade, THA* (Replacement Blade 162-2976/79250)	914-1367	78126
24" Complete Application Squeegee, 1/4" Notch EPDM Blade, THA* (Replacement Blade 162-3990/79270)	181-3559	78124
24" Complete Application Squeegee, 1/2" Notch EPDM Blade, THA* (Replacement Blade 976-6106/79310)	181-3500	78122



Gauge Rakes *Apply a variety of epoxies, aggregates, and decorative concrete flakes at a uniform depth*

ITEM	SALES NO.	MFG. NO.
24" CAM® Gauge Rake, size 1 (1/16") CAM set (pair), THA*	181-3492	57201
24" CAM® Gauge Rake, size 2 (1/8") CAM set (pair), THA*	181-3484	57202
24" CAM® Gauge Rake, size 4 (1/4") CAM set (pair), THA*	181-3591	57204
Replacement CAM® 3 Pack - 1 Set Each, Size 1, 2, 4 (1/16", 1/8", 1/4")	181-3542	57180
24" Wire Gauge Rake	162-0764	58609
Replacement Wire for Wire Gauge Rake (set of 4)	162-0772	68611



*Threaded handle adapter



Heavy-Duty Crack Squeegee *Use when filling cracks prior to the application of floor coatings*

ITEM	SALES NO.	MFG. NO.
Heavy-Duty U-Crack Filler Squeegee, Head Only, with Handle Adapter	949-5821	46001

Trowels *Heavy duty trowels spread coatings evenly*

ITEM	SALES NO.	MFG. NO.
Rounded End Trowel - 4"x16"	179-8263	47465
Rounded End Trowel - 4"x18"	181-3526	47466
Finishing Trowel - 4"x12"	976-4440	47404
Finishing Trowel - 4"x16"	181-3518	47405
Epoxy Mortar Trowel - 3"x12"	181-3575	47460
Epoxy Mortar Trowel - 3"x16"	181-3567	47461
V-Notch Trowel - 3/16" Notch (11" x 4-1/2" Overall)	182-7138	47406
V-Notch Trowel - 1/4" Notch (11" x 4-1/2" Overall)	976-4432	47403
V-Notch Trowel - 1/2" Notch (11" x 4-1/2" Overall)	976-4424	47402
Heavy-Duty Cove Trowel, 1" Radius (7-1/2" x 5-3/4" x 3-1/2")	991-7600	47414
6" Cove Trowel with 1" Radius (6" x 6")	968-8615	47412



Spiked Rollers *Use on freshly applied floor coatings to release trapped gas*

ITEM	SALES NO.	MFG. NO.
9" Spiked Roller 9/16", Radial Roller Frame	976-4879	59458
9" Metal Tined Spiked Roller	991-7642	48090
18" Spiked Roller, 9/16", Aluminum Frame, THA*	976-4895	59468
18" Metal Tined Spiked Roller, with End Caps	991-7659	48091



Safety Equipment *Premium protection for eyes and respiratory systems*

ITEM	SALES NO.	MFG. NO.
3M™ TEKK Protection™ Paint Project Respirator 6211 – Medium	154-6068	6211
3M™ TEKK Protection™ Organic Vapor Cartridges 6001 – 2 Pairs	573-4298	6001
Chemical Splash/Impact Safety Goggles	106-0664	91252-8000S
Nitrile Powder Free Gloves 50-Pk.	907-0830	C600150PL

*Threaded handle adapter

